

# Panasonic®

## Operating Instructions Portable CD Player

Model No.  
**SL-CT720**

### Dear Customer

Thank you for purchasing this product.  
Before connecting, operating or adjusting this product, please read the instructions completely. Please keep this manual for future reference.



This manual was printed with soy based ink.



Panasonic Consumer Electronics Company,  
Division of Panasonic Corporation of North America  
One Panasonic Way Secaucus, New Jersey 07094 <http://www.panasonic.com>

RQT7719-P  
F1204TR0

The model number and serial number of this product can be found on either the back or the bottom of the unit.  
Please note them in the space provided below and keep for future reference.

MODEL NUMBER **SL-CT720**

SERIAL NUMBER \_\_\_\_\_

### User memo:

DATE OF PURCHASE \_\_\_\_\_

DEALER NAME \_\_\_\_\_

DEALER ADDRESS \_\_\_\_\_

TELEPHONE NUMBER \_\_\_\_\_

## Troubleshooting guide

Before requesting service, make the following checks. If you are in doubt about some of the check points, or if the solutions indicated in the chart do not solve the problem, refer to the limited warranty for each area on page 3.

<b>No play.</b>	<ul style="list-style-type: none"> <li>•The HOLD function is on. Cancel HOLD (⇄page 5).</li> <li>•The batteries may be depleted (⇄page 5).</li> <li>•The disc isn't correctly set.</li> <li>•The disc is scratched or dirty. (Tracks may be skipped particularly with MP3 discs.)</li> <li>•There is moisture on the lens. Wait for about an hour and then try again.</li> <li>•The lens is dirty: clean it with a blower (recommended product: <b>SZZP1038C</b>). If the lens gets marked with fingerprints, gently wipe them off with a cotton swab.</li> <li>•The unit may not read a track properly if shaken strongly during disc reading.</li> <li>•If there is no data between sessions on a multi-session disc, play may not be possible.</li> <li>•If there is a large amount of JPEG data etc. within a MP3 file, sound may be muted and play may not be possible.</li> <li>•If the disc contains data with different formats, sound may be muted and play may not be possible.</li> <li>•If a CD-ROM format disc contains MP3 and other files, only the MP3 files will be playable.</li> </ul>
<b>No sound or there is a lot of noise.</b>	<ul style="list-style-type: none"> <li>•Ensure the plugs are inserted firmly.</li> <li>•Wipe the plugs with a clean cloth.</li> <li>•The disc is scratched or dirty.</li> <li>•The sound may be interrupted or there may be noise when playing MP3 if the recording quality is poor.</li> <li>•The elapsed play time disappears and sound is interrupted if bumps continue repeatedly.</li> <li>•Separate the unit from mobile telephones.</li> </ul>
<b>Play doesn't resume from the last point stopped.</b>	<ul style="list-style-type: none"> <li>•This doesn't work during random play.</li> <li>•It may not work correctly under some conditions.</li> </ul>
<b>Play doesn't start from the first track.</b>	<ul style="list-style-type: none"> <li>•Random play modes may be on (⇄page 6).</li> <li>•Play resumes from where last stopped (⇄page 5, Play). (If the lid is opened while the unit is turned off, the resume function may not be cancelled.)</li> </ul>
<b>Cannot search through tracks.</b>	You cannot search through a disc with MP3 files.
<b>Cannot specify point A or B.</b>	You may not be able to specify point A or B at the end of a disc.

<b>Cannot change the Digital Re-master mode, anti-skip mode.</b>	If [◀◀] or [▶▶] is pressed before [•MEMO/◀DISP] you cannot change the mode.
<b>Digital Re-master does not work.</b>	Depending on the type of MP3 disc recording, the effect may not appear.
<b>Cannot skip albums.</b>	You cannot skip from the last to first album, or vice versa, during play.
<b>Cannot hear the remote control's operation tone.</b>	The operation tone may be off (⇄page 6).
<b>The remote control does not work properly.</b>	<ul style="list-style-type: none"> <li>•Remove the plug and reinsert it as fully as possible.</li> <li>•Use only the included remote control to operate the unit.</li> </ul>
<b>Cannot charge.</b>	<ul style="list-style-type: none"> <li>•You aren't using the special rechargeable batteries (⇄page 5).</li> <li>•You must insert two batteries before you can charge.</li> <li>•The unit must be off before you can charge.</li> </ul>
<b>The AC adaptor becomes warm during charging.</b>	This is normal.
<b>The batteries are taking a long time to charge.</b>	The batteries may take as long as 6 hours to recharge under some conditions.
<b>Play time is short after charging.</b>	<ul style="list-style-type: none"> <li>•This may occur the first time you charge the batteries or if you haven't used them for a long time. Play time should be restored after a few charges.</li> <li>•The batteries can go flat if you leave the AC adaptor connected after charging is complete.</li> <li>•If play is extremely short even after fully charging the batteries, the batteries may have exceeded their life. (Rechargeable batteries can be charged approximately 300 times.) Please purchase new nickel-metal hydride rechargeable batteries (HHF-AZ01).</li> </ul>
<b>The battery indicator fails to appear or is incorrect.</b>	<ul style="list-style-type: none"> <li>•The indicator does not appear when the AC adaptor is connected.</li> <li>•The indicator may not appear correctly when using the rechargeable and dry cell batteries at the same time and under certain conditions.</li> </ul>
<b>The unit stops working.</b>	Disconnect then reconnect all power sources (batteries and AC adaptor).
<b>Power cuts off.</b>	If you connect or disconnect the AC adaptor, the power cuts off even if rechargeable batteries are inserted.

# Caution

Discontinue use if you experience discomfort with the earphones or any other parts that directly contact your skin. Continued use may cause rashes or other allergic reactions.

## ■ Batteries

- Do not peel off the covering on the batteries and do not use if the covering has been peeled off.
- Align the poles + and - correctly when inserting the batteries.
- Do not mix different types of batteries or old and new batteries.
- Remove the batteries if you do not intend to use the unit for a long time.
- Do not throw into a fire, short-circuit, disassemble, or subject to excessive heat.
- Do not attempt to recharge dry cell batteries.
- When carrying batteries in a pocket or bag, ensure no metal objects such as necklaces are placed together with them. Contact with metal may cause short-circuiting which can cause a fire. For safety, carry the rechargeable batteries in the battery carrying case.

## ■ CDs

- Do not use irregularly shaped CDs.
- Do not use non-specification discs.
- Do not use CDs printed with label printers available on the market.
- Do not use CDs with labels and stickers that are coming off or with adhesive exuding from under labels and stickers.

## ■ Listening



Do not play your headphones or earphones at a high volume. Hearing experts advise against continuous extended play.

If you experience a ringing in your ears, reduce volume or discontinue use.

Do not use while operating a motorized vehicle. It may create a traffic hazard and is illegal in many areas.

You should use extreme caution or temporarily discontinue use in potentially hazardous situations.

Even if your headphones or earphones are the open-air type designed to let you hear outside sounds, don't turn up the volume so high that you can't hear what's around you.

Sound can be deceiving. Over time your hearing "comfort level" adapts to higher volumes of sound. So what sounds "normal" can actually be loud and harmful to your hearing.

Guard against this by setting your equipment at a safe level BEFORE your hearing adapts.

To establish a safe level:

- Start your volume control at a low setting.
- Slowly increase the sound until you can hear it comfortably and clearly, and without distortion.

Once you have established a comfortable sound level:

- Leave it there.

## WARNING:

**TO REDUCE THE RISK OF FIRE, ELECTRIC SHOCK OR PRODUCT DAMAGE, DO NOT EXPOSE THIS APPARATUS TO RAIN, MOISTURE, DRIPPING OR SPLASHING AND THAT NO OBJECTS FILLED WITH LIQUIDS, SUCH AS VASES, SHALL BE PLACED ON THE APPARATUS.**

## CAUTION!

**THIS PRODUCT UTILIZES A LASER. USE OF CONTROLS OR ADJUSTMENTS OR PERFORMANCE OF PROCEDURES OTHER THAN THOSE SPECIFIED HEREIN MAY RESULT IN HAZARDOUS RADIATION EXPOSURE. DO NOT OPEN COVERS AND DO NOT REPAIR YOURSELF. REFER SERVICING TO QUALIFIED PERSONNEL.**

## CAUTION:

Use only car power adaptor and car stereo cassette adaptor, Model: RP-CK455 manufactured by Matsushita Electric Industrial Co., Ltd.

The socket outlet shall be installed near the equipment and easily accessible or the mains plug or an appliance coupler shall remain readily operable.

# IMPORTANT SAFETY INSTRUCTIONS

Read these operating instructions carefully before using the unit. Follow the safety instructions on the unit and the applicable safety instructions listed below. Keep these operating instructions handy for future reference.

- 1) Read these instructions.
- 2) Keep these instructions.
- 3) Heed all warnings.
- 4) Follow all instructions.
- 5) Do not use this apparatus near water.
- 6) Clean only with dry cloth.
- 7) Do not block any ventilation openings. Install in accordance with the manufacturer's instructions.
- 8) Do not install near any heat sources such as radiators, heat registers, stoves, or other apparatus (including amplifiers) that produce heat.
- 9) Do not defeat the safety purpose of the polarized or grounding-type plug. A polarized plug has two blades with one wider than the other. A grounding-type plug has two blades and a third grounding prong. The wide blade or the third prong are provided for your safety. If the provided plug does not fit into your outlet, consult an electrician for replacement of the obsolete outlet.
- 10) Protect the power cord from being walked on or pinched particularly at plugs, convenience receptacles, and the point where they exit from the apparatus.
- 11) Only use attachments/accessories specified by the manufacturer.
- 12) Use only with the cart, stand, tripod, bracket, or table specified by the manufacturer, or sold with the apparatus. When a cart is used, use caution when moving the cart/apparatus combination to avoid injury from tip-over.
- 13) Unplug this apparatus during lightning storms or when unused for long periods of time.
- 14) Refer all servicing to qualified service personnel. Servicing is required when the apparatus has been damaged in any way, such as power-supply cord or plug is damaged, liquid has been spilled or objects have fallen into the apparatus, the apparatus has been exposed to rain or moisture, does not operate normally, or has been dropped.



Marking sign is located on bottom of the unit.

A nickel metal hydride battery that is recyclable powers the product you have purchased. Please call 1-800-8-BATTERY for information on how to recycle this battery.



THE FOLLOWING APPLIES ONLY IN THE U.S.A.

## CAUTION:

This equipment has been tested and found to comply with the limits for a Class B digital device, pursuant to Part 15 of the FCC Rules. These limits are designed to provide reasonable protection against harmful interference in a residential installation. This equipment generates, uses and can radiate radio frequency energy and, if not installed and used in accordance with the instructions, may cause harmful interference to radio communications. However, there is no guarantee that interference will not occur in a particular installation. If this equipment does cause harmful interference to radio or television reception, which can be determined by turning the equipment off and on, the user is encouraged to try to correct the interference by one or more of the following measures:

- Reorient or relocate the receiving antenna.
- Increase the separation between the equipment and receiver.
- Connect the equipment into an outlet on a circuit different from that to which the receiver is connected.
- Consult the dealer or an experienced radio/TV technician for help.

Any unauthorized changes or modifications to this equipment would void the user's authority to operate this device.

This device complies with Part 15 of the FCC Rules.

Operation is subject to the following two conditions: (1) This device may not cause harmful interference, and (2) this device must accept any interference received, including interference that may cause undesired operation.

# Product service

1. **Damage requiring service**—The unit should be serviced by qualified service personnel if:
  - (a) The AC power supply cord or AC adaptor has been damaged; or
  - (b) Objects or liquids have gotten into the unit; or
  - (c) The unit has been exposed to rain; or
  - (d) The unit does not operate normally or exhibits a marked change in performance; or
  - (e) The unit has been dropped or the cabinet damaged.
2. **Servicing**—Do not attempt to service the unit beyond that described in these operating instructions. Refer all other servicing to authorized servicing personnel.
3. **Replacement parts**—When parts need replacing ensure the servicer uses parts specified by the manufacturer or parts that have the same characteristics as the original parts. Unauthorized substitutes may result in fire, electric shock, or other hazards.
4. **Safety check**—After repairs or service, ask the servicer to perform safety checks to confirm that the unit is in proper working condition.

## Product information

For product information or assistance with product operation:

In the U.S.A., refer to the "Limited Warranty" on page 3.

For assistance in the continental U.S.A. in obtaining repairs please ship the product to:

**Panasonic Services Company - Customer Service Center**  
Suite B 4900 George McVay Drive  
McAllen, TX 78503

In Puerto Rico contact Panasonic Puerto Rico, Inc.

Tel. (787) 750-4300 Fax. (787) 768-2910

When shipping the unit carefully pack and send it prepaid, adequately insured and preferably in the original carton. Include a letter detailing the complaint and provide a day time phone number where you can be reached.

**IF REPAIR IS NEEDED DURING THE WARRANTY PERIOD THE PURCHASER WILL BE REQUIRED TO FURNISH A SALES RECEIPT/PROOF OF PURCHASE INDICATING DATE OF PURCHASE, AMOUNT PAID AND PLACE OF PURCHASE. CUSTOMER WILL BE CHARGED FOR THE REPAIR OF ANY UNIT RECEIVED WITHOUT SUCH PROOF OF PURCHASE.**

Also, the purchaser will be responsible for shipping the unit to the above address.

In Canada, refer to the "LIMITED WARRANTY" on page 3.

## Panasonic Portable Audio Products Limited Warranty

### Limited Warranty Coverage

If your product does not work properly because of a defect in materials or workmanship, Panasonic Consumer Electronics Company or Panasonic Puerto Rico, Inc. (collectively referred to as "the warrantor") will, for the length of the period indicated on the chart below, which starts with the date of original purchase ("warranty period"), at its option either (a) repair your product with new or refurbished parts, or (b) replace it with a new or a refurbished product. The decision to repair or replace will be made by the warrantor.

Product or Part Name	Parts	Labor
All Portable Audio Products except item listed below	One (1) Year	One (1) Year
Rechargeable batteries (in exchange for defective item)	Ten (10) Days	Not applicable

During the "Labor" warranty period there will be no charge for labor. During the "Parts" warranty period, there will be no charge for parts. You must mail-in your product during the warranty period. This Limited Warranty excludes both parts and labor for batteries, antennas, and cosmetic parts (cabinet). This warranty only applies to products purchased and serviced in the United States or Puerto Rico. This warranty is extended only to the original purchaser of a new product which was not sold "as is".

### Mail-In Service

For assistance in the continental U.S.A. in obtaining repairs please ship the product to:

**Panasonic Services Company**  
**Customer Servicenter**  
 Suite B  
 4900 George McVay Drive  
 McAllen, TX 78503

For assistance in Puerto Rico call Panasonic Puerto Rico, Inc. (787)-750-4300 or fax (787)-768-2910. When shipping the unit carefully pack and send it prepaid, adequately insured and preferably in the original carton. Include a letter detailing the complaint and provide a day time phone number where you can be reached.

### Customer Services Directory

Obtain Product Information and Operating Assistance; locate your nearest Dealer or Servicenter; purchase Parts and Accessories; or make Customer Service and Literature requests by visiting our Web Site at: <http://www.panasonic.com/consumersupport> or, contact us via the web at:

<http://www.panasonic.com/contactinfo>

You may also contact us directly at:

1-800-211-PANA (7262),  
 Monday-Friday 9 am-9 pm; Saturday-Sunday 10 am-7 pm, EST.

For hearing or speech impaired TTY users, TTY : 1-877-833-8855

**IF REPAIR IS NEEDED DURING THE WARRANTY PERIOD THE PURCHASER WILL BE REQUIRED TO FURNISH A SALES RECEIPT/PROOF OF PURCHASE INDICATING DATE OF PURCHASE, AMOUNT PAID AND PLACE OF PURCHASE. CUSTOMER WILL BE CHARGED FOR THE REPAIR OF ANY UNIT RECEIVED WITHOUT SUCH PROOF OF PURCHASE.**

### Limited Warranty Limits And Exclusions

This warranty ONLY COVERS failures due to defects in materials or workmanship, and DOES NOT COVER normal wear and tear or cosmetic damage. The warranty ALSO DOES NOT COVER damages which occurred in shipment, or failures which are caused by products not supplied by the warrantor, or failures which result from accidents, misuse, abuse, neglect, mishandling, misapplication, alteration, faulty installation, set-up adjustments, misadjustment of consumer controls, improper maintenance, power line surge, lightning damage, modification, introduction of sand, humidity or liquids, commercial use such as hotel, office, restaurant, or other business or rental use of the product, or service by anyone other than a Factory Servicenter or other Authorized Servicer, or damage that is attributable to acts of God.

**THERE ARE NO EXPRESS WARRANTIES EXCEPT AS LISTED UNDER "LIMITED WARRANTY COVERAGE".**

**THE WARRANTOR IS NOT LIABLE FOR INCIDENTAL OR CONSEQUENTIAL DAMAGES RESULTING FROM THE USE OF THIS PRODUCT, OR ARISING OUT OF ANY BREACH OF THIS WARRANTY.** (As examples, this excludes damages for lost time, travel to and from the servicer, loss of or damage to media or images, data or other memory or recorded content. The items listed are not exclusive, but are for illustration only.)

**ALL EXPRESS AND IMPLIED WARRANTIES, INCLUDING THE WARRANTY OF MERCHANTABILITY, ARE LIMITED TO THE PERIOD OF THE LIMITED WARRANTY.**

Some states do not allow the exclusion or limitation of incidental or consequential damages, or limitations on how long an implied warranty lasts, so the exclusions may not apply to you.

This warranty gives you specific legal rights and you may also have other rights which vary from state to state. If a problem with this product develops during or after the warranty period, you may contact your dealer or Servicenter. If the problem is not handled to your satisfaction, then write to the warrantor's Consumer Affairs Department at the addresses listed for the warrantor.

**PARTS AND SERVICE, WHICH ARE NOT COVERED BY THIS LIMITED WARRANTY, ARE YOUR RESPONSIBILITY.**

### Accessory Purchases

Purchase Parts, Accessories and Instruction Books online for all Panasonic Products by visiting our Web Site at: <http://www.pasc.panasonic.com> or, send your request by E-mail to: [npcparts@us.panasonic.com](mailto:npcparts@us.panasonic.com)

You may also contact us directly at:

1-800-332-5368 (Phone) 1-800-237-9080 (Fax Only) (Monday - Friday 9 am to 8 pm, EST.)

Panasonic Services Company

20421 84th Avenue South, Kent, WA 98032

(We Accept Visa, MasterCard, Discover Card, American Express, and Personal Checks)

For hearing or speech impaired TTY users, TTY : 1-866-605-1277

### Service in Puerto Rico

Panasonic Puerto Rico, Inc.

Ave. 65 de Infantería, Km. 9.5, San Gabriel Industrial Park, Carolina, Puerto Rico 00985

Phone (787)750-4300, Fax (787)768-2910

F1104

## ONLY FOR CANADA

**Panasonic Canada Inc.**

5770 Ambler Drive, Mississauga, Ontario L4W 2T3

## PANASONIC/TECHNICS PRODUCT - LIMITED WARRANTY

Panasonic Canada Inc. warrants this product to be free from defects in material and workmanship and agrees to remedy any such defect, or at its option, replace the product for a period as stated below from the date of original purchase.

**Technics Audio Product**  
**Panasonic Audio & DVD Product**  
**Accessories including rechargeable batteries**

**One (1) year, parts and labour**  
**One (1) year, parts and labour**  
**Ninety (90) days**

### LIMITATIONS AND EXCLUSIONS

This warranty does not apply to products purchased outside Canada or to any product which has been improperly installed, subjected to usage for which the product was not designed, misused or abused, damaged during shipping, or which has been altered or repaired in any way that affects the reliability or detracts from the performance, nor does it cover any product which is used commercially. Dry cell batteries are also excluded from coverage under this warranty.

This warranty is extended to the original end user purchaser only. A purchase receipt or other proof of date of original purchase is required before warranty service is performed.

**THIS EXPRESS, LIMITED WARRANTY IS IN LIEU OF ALL OTHER WARRANTIES, EXPRESS OR IMPLIED, INCLUDING ANY IMPLIED WARRANTIES OF MERCHANTABILITY AND FITNESS FOR A PARTICULAR PURPOSE.**

**IN NO EVENT WILL PANASONIC CANADA INC. BE LIABLE FOR ANY SPECIAL, INDIRECT OR CONSEQUENTIAL DAMAGES.**

In certain instances, some jurisdictions do not allow the exclusion or limitation of incidental or consequential damages, or the exclusion of implied warranties, so the above limitations and exclusions may not be applicable.

### WARRANTY SERVICE

For product operation and information assistance, please contact your Dealer or our Customer Care Centre at: Telephone #: (905) 624-5505 Fax #: (905) 238-2360 Web: [www.panasonic.ca](http://www.panasonic.ca)

For product repairs, please contact one of the following:

- Your Dealer who will inform you of an authorized Servicentre nearest you.
- Our Customer Care Centre at (905) 624-5505 or [www.panasonic.ca](http://www.panasonic.ca)
- A Panasonic Factory Servicentre listed below:

**Richmond,**  
**British Columbia**  
 Panasonic Canada Inc.  
 12111 Riverside Way  
 Richmond, BC  
 V6W 1K8  
 Tel: (604) 278-4211  
 Fax: (604) 278-5627

**Calgary, Alberta**  
 Panasonic Canada Inc.  
 6835-8<sup>th</sup> St. N. E.  
 Calgary, AB  
 T2E 7H7  
 Tel: (403) 295-3955  
 Fax: (403) 274-5493

**Mississauga, Ontario**  
 Panasonic Canada Inc.  
 5770 Ambler Dr.  
 Mississauga, ON  
 L4W 2T3  
 Tel: (905) 624-8447  
 Fax: (905) 238-2418

**Lachine, Québec**  
 Panasonic Canada Inc.  
 3075, rue Louis A. Amos  
 Lachine, QC  
 H8T 1C4  
 Tel: (514) 633-8684  
 Fax: (514) 633-8020

### IF YOU SHIP THE PRODUCT TO A SERVICENTRE

Carefully pack and send prepaid, adequately insured and preferably in the original carton. Include details of the defect claimed, and proof of date of original purchase.

# Supplied Accessories

## Check the packing carton for these accessories.

- 1 **Wired remote control:** N2QCBD000046
- 1 **Pair of stereo earphones:** LOBAB0000190
- 1 **AC adaptor:** RFEA415C-1S
- 1 **External battery case:** RFA2666-H
- 2 **Nickel-metal hydride rechargeable batteries:**  
Recommended replacement rechargeable batteries:  
HHF-AZ01 (Nickel-metal hydride rechargeable batteries)
- 1 **Battery carrying case:** RFC0062-X

Use numbers indicated when ordering replacements or optional accessories from your Panasonic dealer.  
(Product numbers correct as of November 2004. These may be subject to change.)

**To order accessories in the U.S.A., refer to the "Limited Warranty" on page 3.**

# Display

<b>HOLD</b>	The HOLD function is on. Cancel HOLD (⇨page 5).
<b>NODISC</b>	<ul style="list-style-type: none"> <li>● You haven't inserted a disc or it isn't inserted correctly.</li> <li>● You have inserted a disc this unit cannot play.</li> </ul>
<b>OPEN</b>	The disc lid is open.
<b>CHARGE</b>	The batteries are charging. Charging is complete when this disappears.
<b>F</b>	The program already contains 20 tracks.
<b>&gt;</b>	Reading MP3 files.

# Specifications

## Audio (CD-DA)

Sampling frequency: 44.1 kHz  
No. of channels: 2 (left and right, stereo)  
Headphone output level:  
RMS max. 6 mW+6 mW/  
16 Ω (adjustable)  
Frequency response: 20 Hz to 20,000 Hz  
(+0.5 dB to -8 dB)

## Pickup

Light source: Semiconductor laser  
Wavelength: 780 nm

## MP3

Supported bit rates:  
(Supports variable bit rates)  
32 kbps to 320 kbps  
(128 kbps is recommended)  
Supported sampling frequency:  
48 kHz/44.1 kHz/32 kHz  
Maximum number of items  
(total no. of albums and tracks): 999  
Maximum album levels: 100

## General

Power supply:  
DC input (via included AC adaptor):  
DC 4.5 V  
AC adaptor input: AC 120 V 60 Hz  
Power consumption:  
Using AC adaptor  
(MP3/CD-DA): 2.6 W/2.6 W  
Recharging: 5.5 W

AC adaptor power consumed  
in standby mode: 1.6 W

## Play time:

Using on a flat stable surface at 25 °C (77 °F), EQ is off, Hold is on, Anti-skip is on POS 1 (CD-DA), recommended bit rate (MP3:128 kbps), and the Digital Re-master is off (MP3). Play times are in hours and approximate.

Batteries used	MP3 disc	CD-DA disc
2 alkaline batteries	100	55
2 supplied rechargeable batteries	40	23
2 supplied rechargeable and 2 alkaline batteries	140	80

Recharging time: About 2 to 3 hours

- The play time may be less depending on the operating conditions.
- Play time will be considerably reduced when playing CD-RW.

Operational temperature range:  
0 °C-40 °C (32 °F-104 °F)

Rechargeable temperature range:  
5 °C-40 °C (41 °F-104 °F)

Dimensions (W×H×D):  
136.4 mm×16.1 mm×136.4 mm  
(5<sup>3</sup>/<sub>8</sub>"×5<sup>1</sup>/<sub>8</sub>"×5<sup>3</sup>/<sub>8</sub>"

Mass: 200 g (7.1 oz.) (with batteries)  
154 g (5.4 oz.) (without batteries)

## Note:

Specifications are subject to change without notice.

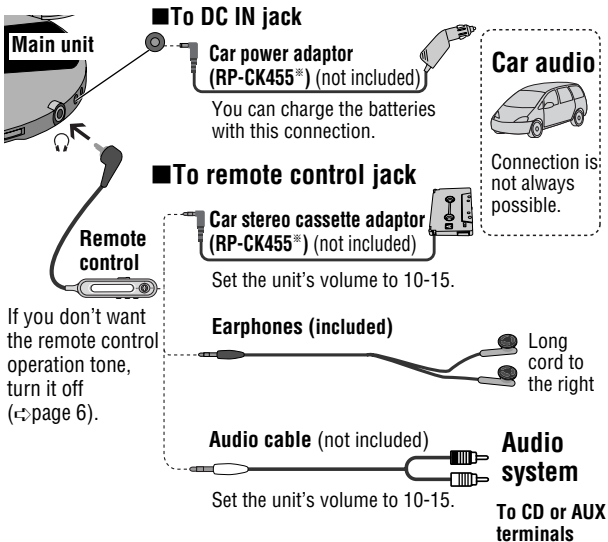
Mass and dimensions are approximate.

# Connections

Turn off this unit and the other equipment before connection.  
Insert each plug fully. [Plug type: 3.5 mm (1/8 in.) stereo]

When the unit is connected to other equipment, adjust the volume on the connected equipment.

(Product numbers correct as of November 2004. These may be subject to change.)



※ The RP-CK455 set contains the car power adaptor and car stereo cassette adaptor. Be sure to use these together with the car audio connection.

# Note on CD-R and CD-RW

## (CD-DA/MP3 only)

For CD-DA format, use a music disc and finalize\* it after recording. The unit may not be able to play some discs due to the condition of the recording.

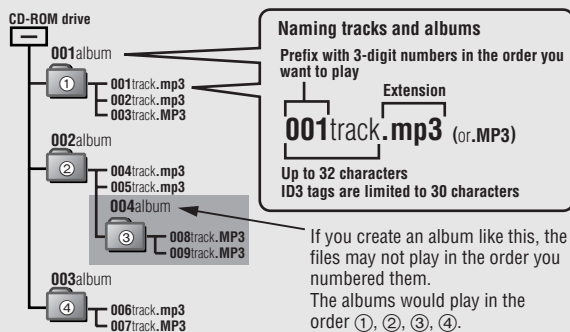
※ A process performed after recording that enables CD-R/CD-RW players to play audio CD-R and CD-RW.

## Playing MP3

MP3: A method of compressing data with little loss to the original sound quality. MPEG Layer-3 audio decoding technology licensed from Fraunhofer IIS and Thomson multimedia.

## ■ When creating MP3 files to play on this unit

Disc formats: ISO9660 level 1 and level 2 (except for extended formats)



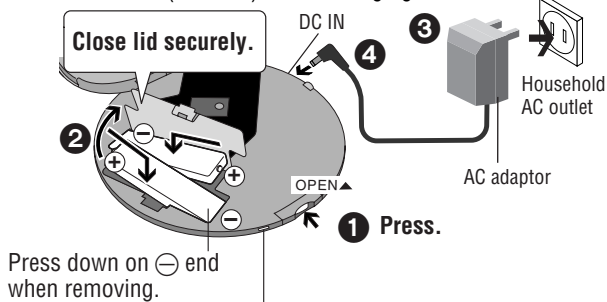
## ■ Unit limitations

- Only the artist name and track title ID3 tags (version 1.0 and 1.1) are displayed.
- This unit is compatible with multi-session discs but if there are a lot of sessions it takes more time for play to start. Keep the number of sessions to a minimum to avoid this.
- This unit cannot play files recorded using packet write.
- Depending on how you create MP3 files, they may not play in the order you numbered them or may not play at all.

## Rechargeable batteries Charge before initial use.

### Recommended replacement rechargeable batteries: HHF-AZ01 (Nickel-metal hydride rechargeable batteries)

Turn the unit off (⇨below) before charging.



Press down on ⊖ end when removing.

#### Charging starts.

The “CHG” lamp lights.

#### Charging complete.

The “CHG” lamp goes out.

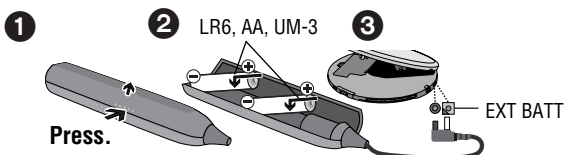
During charging, “ ” scrolls on the remote control.

- You can charge the batteries before they are fully discharged.
- Fit the battery lid so it is secure and flush with the battery compartment. If it comes loose, it may scratch your discs.

#### Conserving power

If you are not going to be using the unit for a long time, we recommend removing the AC adaptor from the AC outlet. 1.6 W of power is consumed by the AC adaptor even if the main unit is not connected.

## Dry cell batteries (not included)



- You can get longer play time by also attaching this case. (The unit will also work when batteries are in the case only.)

## The battery indicator

This indicator appears when the unit is on.



The unit switches off shortly after the indicator starts flashing.

- Before play starts the battery indicator level may temporarily go down or flash although the batteries are not drained. It appears correctly once you start play.

## AC adaptor

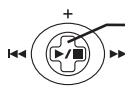
The unit will also work when using the AC adaptor only. Connect the AC adaptor (⇨left).

# Button control guide

<b>Open lid</b>	OPEN ▲	<b>Press the white part as far as possible.</b> 
<b>HOLD (Function lock)</b>	HOLD ►	<b>Slide in direction of arrow.</b> (Slide in opposite direction to cancel.) • The unit and remote control each have independent HOLD switches.
<b>Play</b>	 (Remote control)  (Main unit)	Lights while playing MP3  Current track number      Elapsed play time of track • Play begins from where last stopped (Resume function). (This will be cancelled if you open the lid.)
<b>Skip</b>	 (Forward)  (Backward)	<b>Move.</b> (Remote control)/ <b>Press.</b> (Main unit) • Move or press [] twice consecutively to skip to the previous track during play. • You cannot use [] to skip to any previous tracks during random and random repeat (⇨page 6) modes.
<b>Search</b> 	 (Forward)  (Backward)	<b>During play, move and hold.</b> (Remote control)/ <b>press and hold.</b> (Main unit) • You can only search within the current track except for during all track repeat (⇨page 6) and regular play.

<b>Album skip</b>  MP3	 (Forward)  (Backward)	<b>Until the album you want appears, move and hold.</b> (Remote control)/ <b>press and hold.</b> (Main unit)  Album number      Number of tracks
<b>Volume control (0-25)</b>	+ (Increase) - (Decrease)	<b>Move.</b> (Remote control) / <b>Press.</b> (Main unit)
<b>Pause</b>	 (Main unit)	<b>Press.</b> • Press again to restart play.
<b>Stop/Turn off</b>	 (Remote control)  (Main unit)	 Number of tracks      Total play time <b>Press.</b>  Number of albums      Number of tracks • Press and hold to turn the unit off. (Remote control)/ Press again to turn the unit off. (Main unit) • If the unit is left in stop mode for approximately 10 minutes, it turns itself off automatically.

## Remote control button guide



: Press

+ : Move Up

- : Move Down

: Move Right

: Move Left

# Using the Remote Control

## EQ button



### Sound quality

Each time you press [EQ], while displayed

3D-1 → 3D-2 → S-XBS → S-XBS+ → TRAIN

Sound field of 3D      Enhanced 3D-1      Boosts the bass      Enhanced S-XBS      Reduces sound leaks and listening fatigue

EQ OFF ←

["EQ" disappears from the display (canceled)]

- The effect may differ with different kinds of music.
- Depending on the recording conditions, sound may be interrupted when switching between EQ settings.
- If you select 3D-1 or 3D-2 then try playing a disc that contains both CD-ROM format and CD-DA format tracks, there will be a brief noise when the disc changes from playing the CD-ROM format track to the CD-DA format one.
- If you select 3D-1 or 3D-2, increasing the unit's volume beyond 19 will not increase the volume output.

### Remote control operation tone

Each time you press and hold [EQ]

BP OFF ← → BP ON  
Tone off                      Tone on

#### When the display is difficult to see

(On the main unit)

Set the main unit to HOLD while stopped. While pressing and holding [▶/■], press [+] (darker) or [-] (lighter).

#### To see the display in the dark

Each time you change the position of the hold switch on the remote control, the display will light for around 5 seconds.

## MODE button



### Play modes

Each time you press [MODE]

During play  
or  
While paused

1 → RND → RND → A → B  
One track repeat      All track repeat      Random      Random repeat      AB repeat (↔below)

← No display (canceled) ←

• You cannot select "RND" and "A → B" while playing MP3.

#### ■ Specifying the AB segment

Press [•MEMO/ = DISP] at the start point (A) and once more at the end point (B).

A → B → A → B

• Stop or skip (↔page 5) to cancel.

• If you do not specify point B this will automatically be set as the end of the disc. Repeat begins when this point is reached. You can specify point B again by pressing [•MEMO/ = DISP].

### Album mode (Play only the tracks in a selected album)

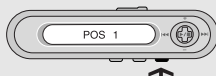
MP3

Each time you press and hold [MODE]

▲ Album mode ← → No display (canceled)

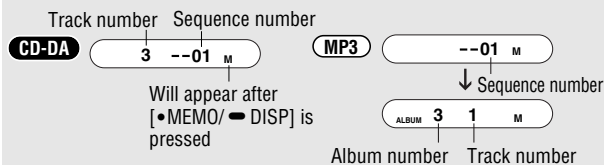
- To select another album (↔page 5, Album skip)
- You cannot turn album mode on during program play (↔below).

## •MEMO/ = DISP button



### Program play (Desired tracks only)

While stopped, use [◀◀] or [▶▶] to select the track, then press [•MEMO/ = DISP].



Repeat to program up to 20 tracks.

Play	▶/■	Press after all desired tracks have been programmed.
Confirm tracks	•MEMO/ = DISP	Press during play.
Cancel	▶/■	Press during play. ("M" disappears.)

### Anti-skip mode (CD-DA)

The anti-skip function (ANTI-SKIP SYSTEM) reduces or eliminates skipping caused by vibration. You can change the anti-skip memory time.

While stopped, each time you press and hold [•MEMO/ = DISP]

POS 1 ← → POS 2

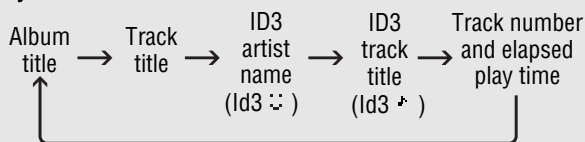
Anti-skip enhanced mode,  
180-second anti-skip memory

Sound enhanced mode,  
45-second anti-skip memory

- You cannot change the memory time for MP3. It is a maximum of 400 seconds for MP3 recorded at 128 kbps.

### Display changes (MP3)

Each time you press and hold [•MEMO/ = DISP] during play



- "~" is displayed in place of anything over 32 characters.
- " " is displayed in place of characters this unit cannot display.
- " " appears if ID3 tags haven't been entered.

### Digital Re-master (Enjoy more natural sound)

MP3

You can regenerate signal frequency lost during compression, restoring the sound to near pre-compression form.

While stopped, each time you press and hold [•MEMO/ = DISP]

RM ON ← → RM OFF  
Sound enhanced                      Conserves battery life